

# MAXOS®

○ ○ ○ ○ ○  
Safety Sight and Level Gauge  
Glasses Special-tempered

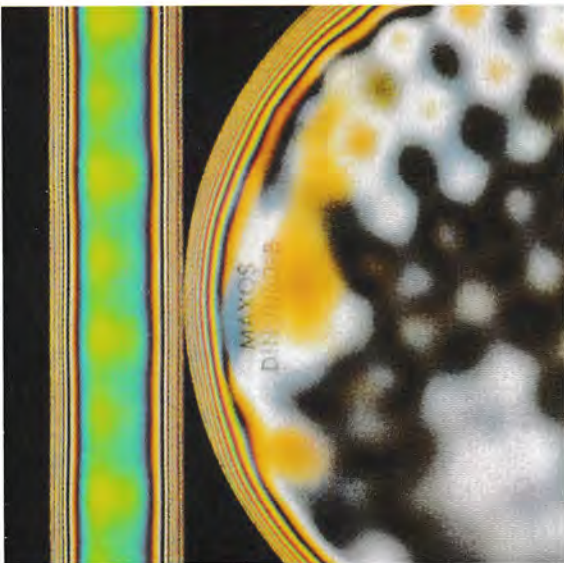


**SCHOTT**  
glass made of ideas



# Long form level gauge glasses, reflex and transparent

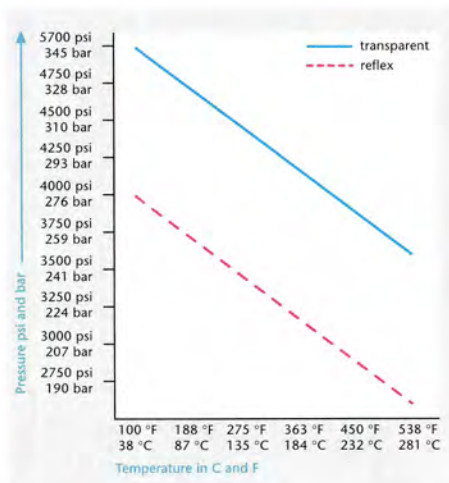
## Technical characteristics



Special tempered MAXOS® glasses under polarised light.

Bending strength is determined by the surface compressive stress and the inherent resistance of the glass. The inherent resistance is heavily dependent upon the surface quality.

For safety reasons, the stress to the glasses caused by internal forces, thermal stress and vessel pressure have to be totally absorbed by the surface compressive stress so that a tensile stress of the glass surface is prevented.



Pressure temperature graph for MAXOS®-glasses. Range of application with no technically significant glass attack.

### Application conditions

Application conditions	Maximum permissible pressure		Maximum permissible temperature	
	bar	psi	°C	°F
Saturated steam or hot water in direct contact with reflex or transparent sight glasses	35	500	243	470
Saturated steam or hot water in contact with transparent sight glasses protected with mica	103	1.500	320	608
Non-corrosive, non-steam service and no technically significant glass attack, with reflex or transparent glasses	280	4.000	38	100
Transparent sight glasses in contact with medias with no technically significant glass attack	345	5.000	38	100
High pressure transparent sight glasses in special armatures (gauges)	414	6.000	38	100